

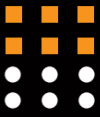


**ESTRON**<sup>TM</sup>

ESTRON MARKETING PTE. LTD.

# SPIDER SERIES

Quality Architectural  
Hardware Specialist

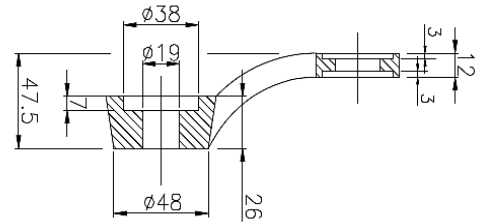
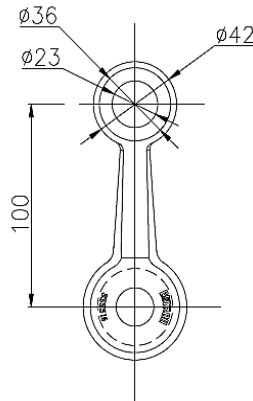


## FEATURES

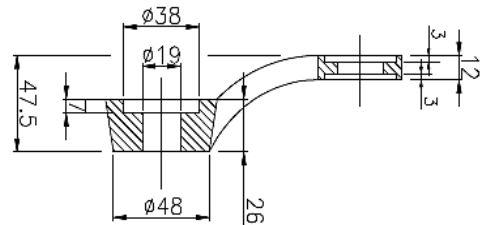
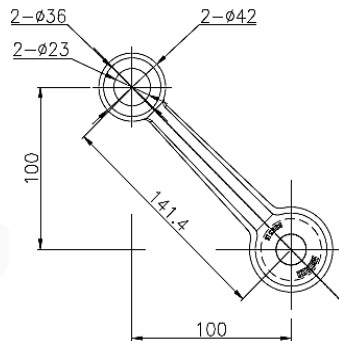
- Suitable for Glass Façade, Stylish, Interior Glass and Architectural System
- Material: SUS 316
- Finish: Satin Stainless Steel (SSS)



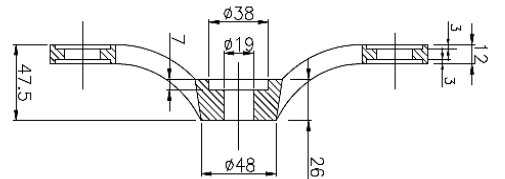
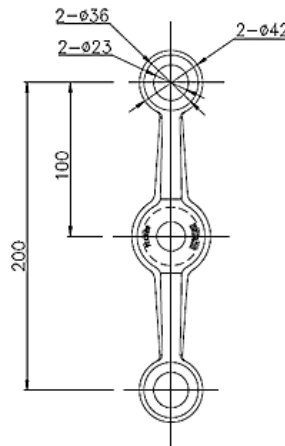
**SP200-1**  
(100mm c/c)



**SP200-1L**  
(141.1mm c/c)

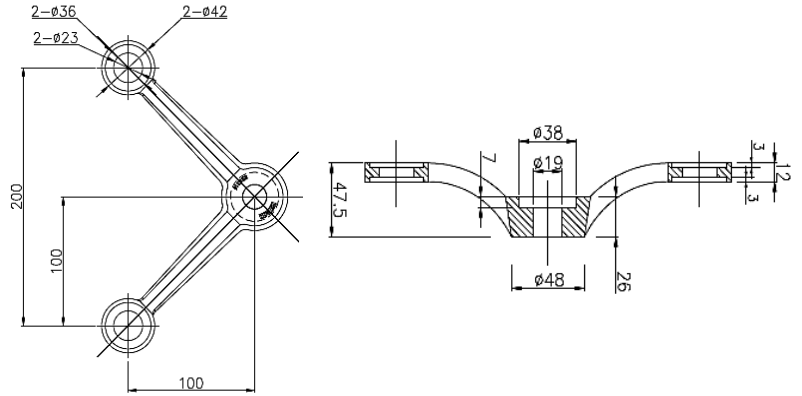


**SP200-2**  
(200mm c/c)

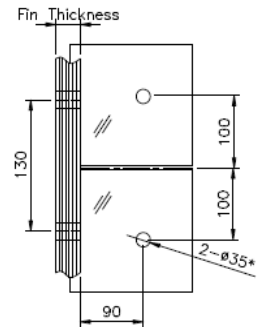
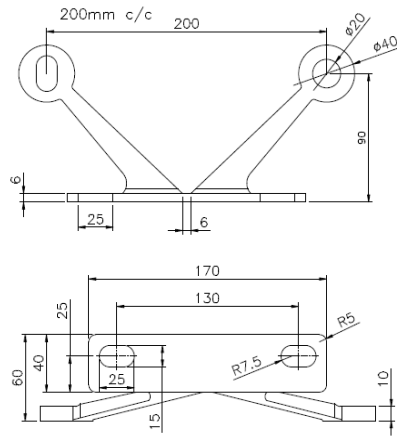




**SP200-2L**  
(200mm c/c)



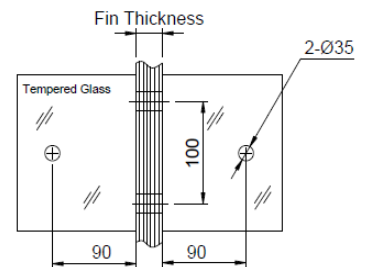
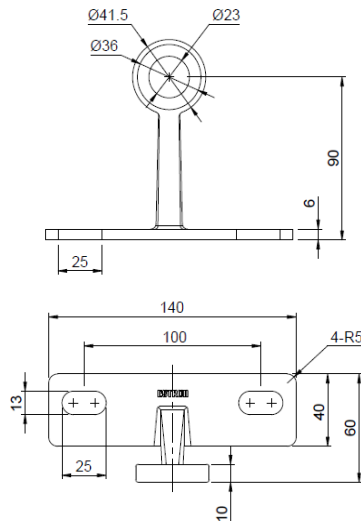
**SP200-2S**  
(200mm c/c)



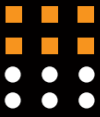
**GLASS PREPARATION**  
\*Please refer to Routel Glass Cut Out for details



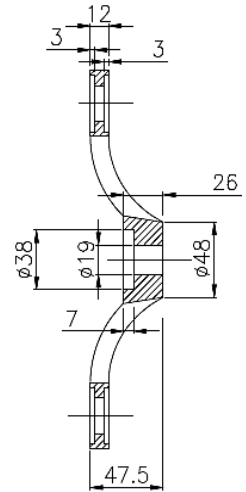
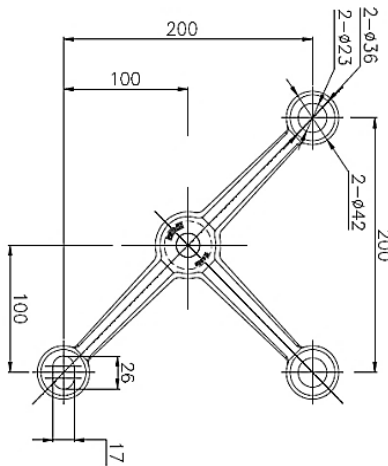
**SP200-2W**  
(200mm c/c)



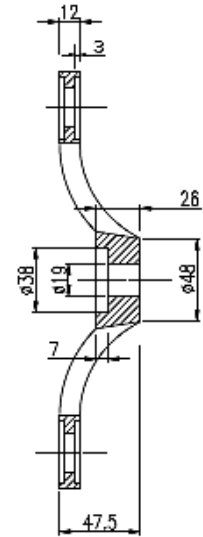
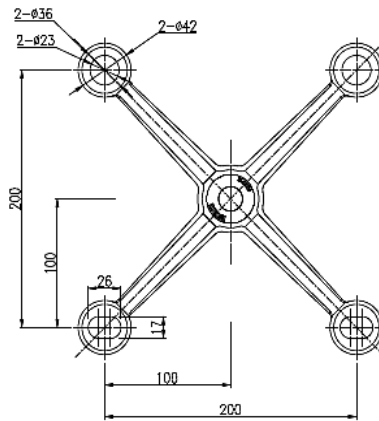
**GLASS PREPARATION**  
\*Please refer to Routel Glass Cut Out for details



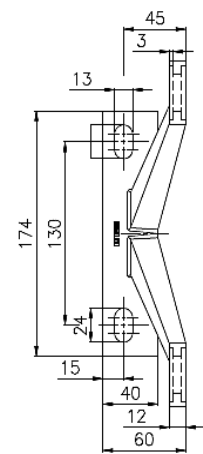
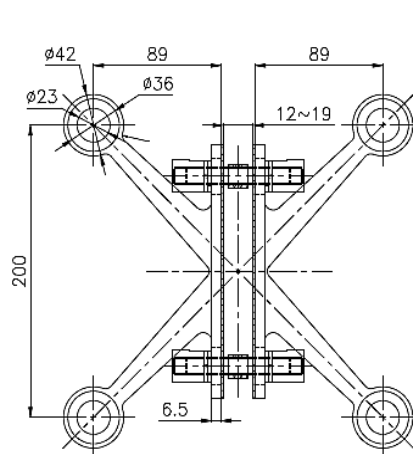
**SP200-3**  
(200mm c/c)



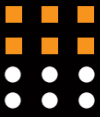
**SP200-4**  
(200mm c/c)



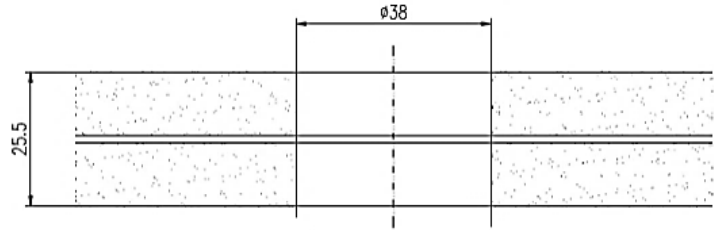
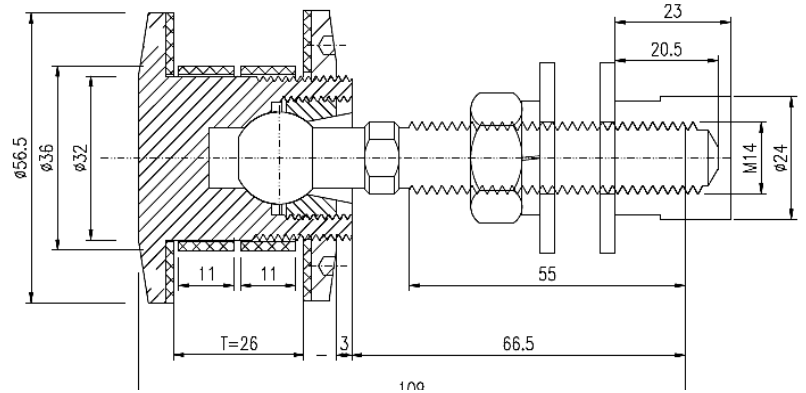
**SP200-4W**  
(200mm c/c)  
c/w bolts & nuts







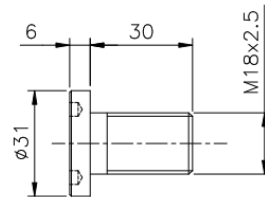
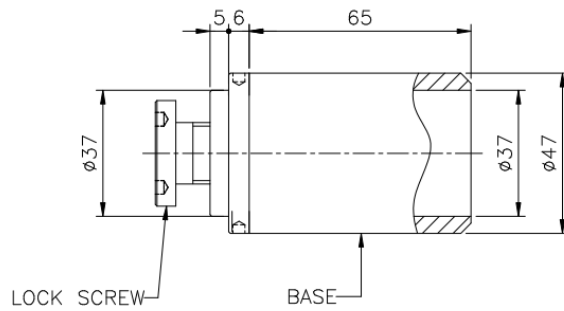
**SP200-T4**



GLASS PREPARATION  
(Max. Thk 25.52mm)



**SP200-B2**  
(Spider Base)  
Comprising of 2 parts:  
SUS 316 and  
low carbon steel



LOCK SCREW



**Estron Marketing Pte. Ltd.**

141 Woodlands Industrial Park E5 E-terrace Singapore 757507

tel. +65 6853 9041 fax. +65 6853 9042

e-mail. sales@estron.com.sg url. www.estron.com.sg



*Product improvement is a continuous process,  
please check specifications at point of purchase.*