



ESTRONTM

ESTRON MARKETING PTE. LTD.



LATCHES SERIES

Quality Architectural
Hardware Specialist



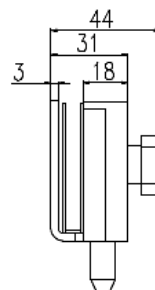
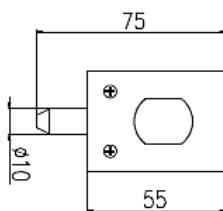


FEATURES

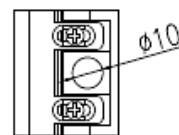
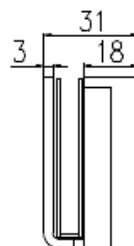
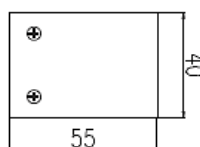
- Suitable for 8 – 12mm glass thickness
- Material: Brass
- Finish: Chrome Polish (CP) / Satin (SN) / Black (BK)
- Various devices to suits various functions of locking glass panels.



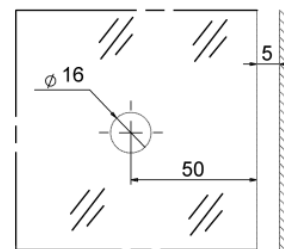
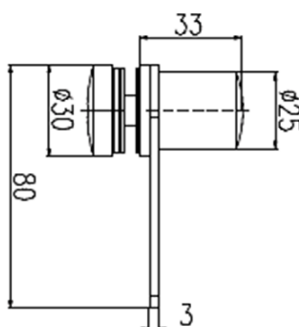
SL-401
Finish: CP



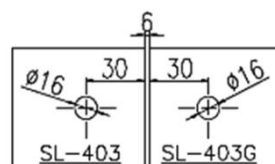
SL-402
Finish: CP



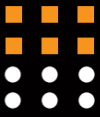
SL-403
Finish: SN
Single Sided Crescent Grip



GLASS PREPARATION (G-W)



GLASS PREPARATION (G-G)



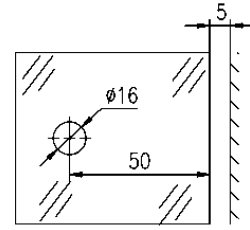
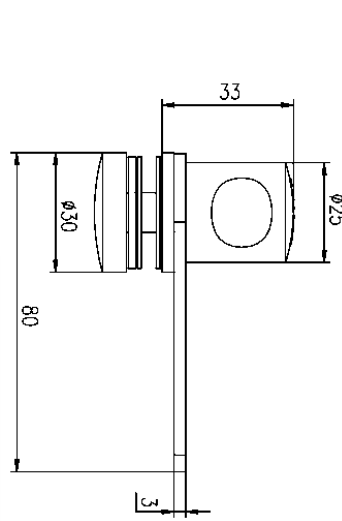
LATCHES SERIES



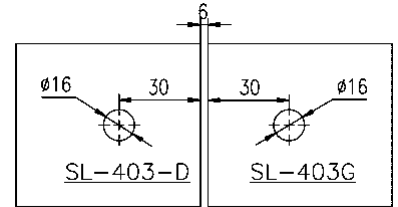
SL-403-D

Finish: CP / BK

Double Sided Crescent Grip



GLASS PREPARATION (G-W)

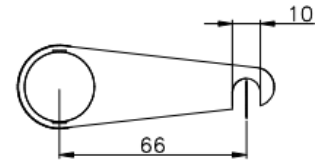
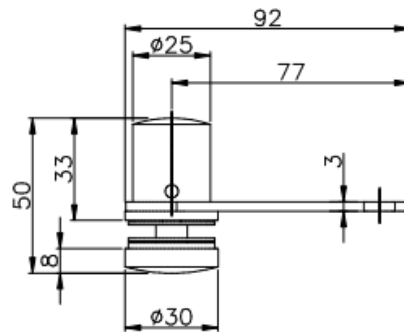


GLASS PREPARATION (G-G)

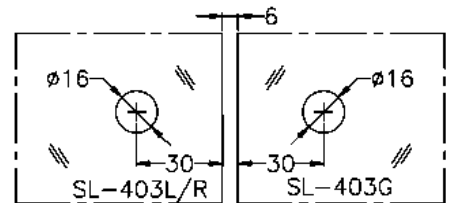
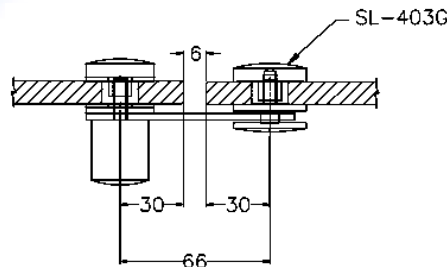


SL-403-L/R

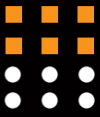
Finish: CP / BK
(Sliding Door Use)



GLASS PREPARATION (G-W)



GLASS PREPARATION (G-G)

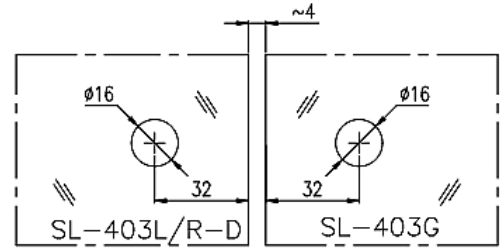
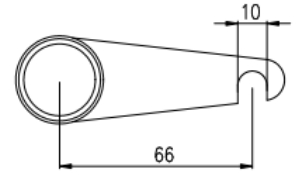
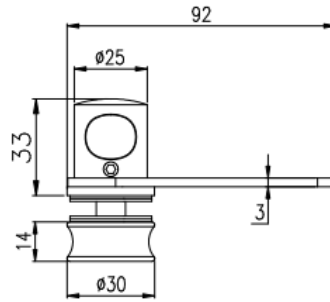


LATCHES SERIES



SL-403-L/R-D

Finish: CP / BK
(Sliding Door Use)

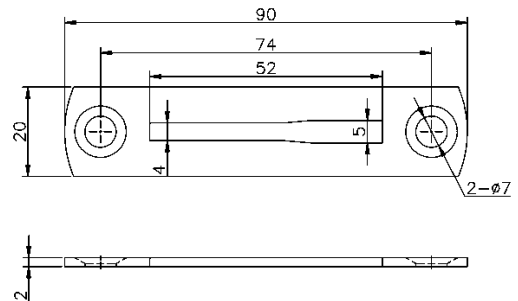


GLASS PREPARATION (G-G)



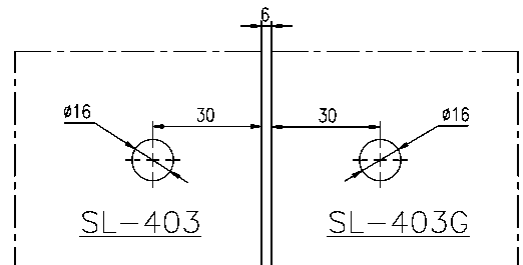
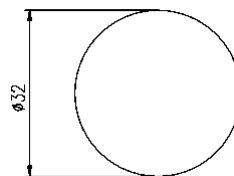
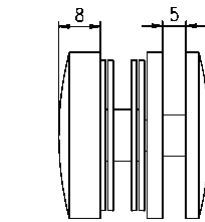
SL-403W

Finish: CP / SN / BK
(Strike Plate)



SL-403-G

Finish: CP / SN / BK
(Glass to Glass)



GLASS PREPARATION (G-G)



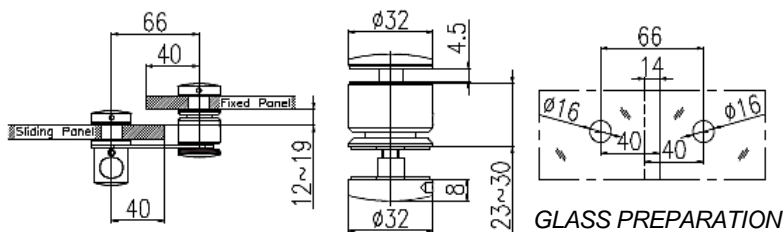
LATCHES SERIES



SL-403-HG

Finish: CP

(Overlapping for Glass to Glass)



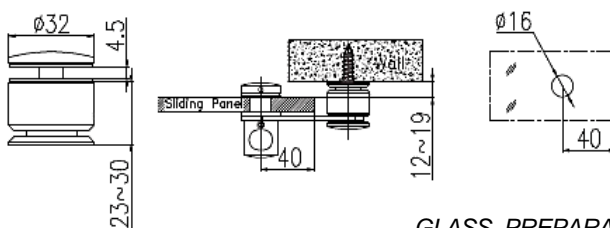
GLASS PREPARATION



SL-403-HW

Finish: CP / BK

(Overlapping for Glass to Wall)

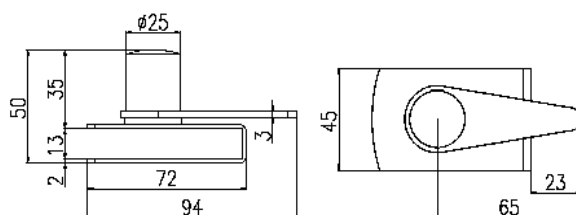


GLASS PREPARATION



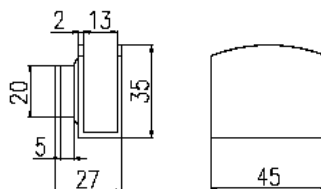
SL-404

Finish: CP / BK



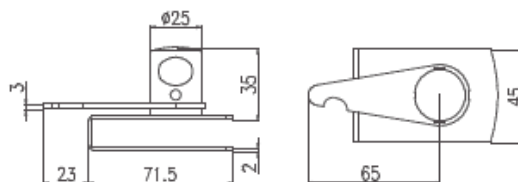
SL-404G/L/R

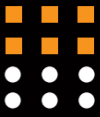
Finish: CP / BK



SL-404-L/R

Finish: CP



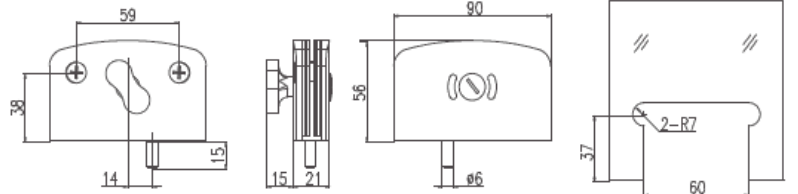


LATCHES SERIES



SL-407

Finish: CP / SN (Swing Door Indicator Latch)

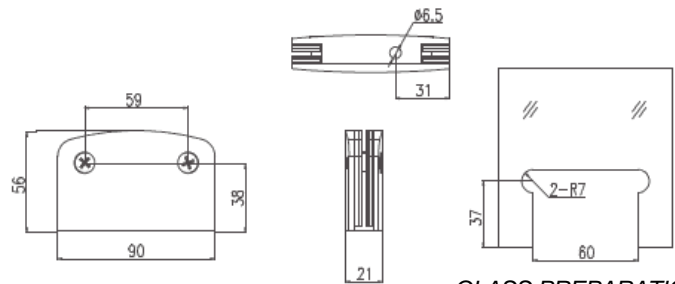


GLASS PREPARATION



SL-407K

Finish: CP / SN (Strike Box to Use with SL-407)

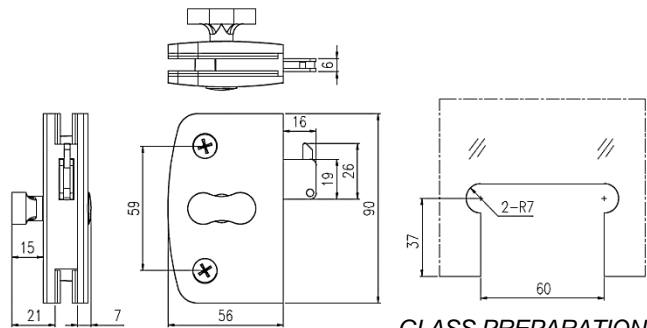


GLASS PREPARATION



SL-407H

Finish: CP (Sliding Door Indicator Latch)

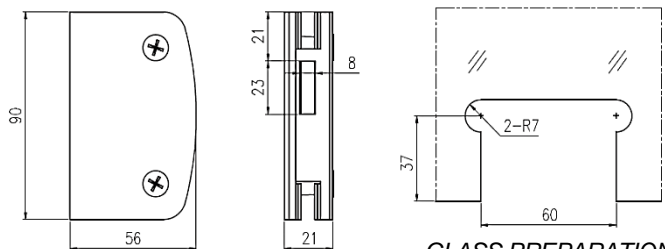


GLASS PREPARATION



SL-407H-K

Finish: CP (Strike Box to Use with SL-407H)



GLASS PREPARATION



Estron Marketing Pte. Ltd.

141 Woodlands Industrial Park E5 E-terrace Singapore 757507

tel. +65 6853 9041 fax. +65 6853 9042

e-mail. sales@estron.com.sg url. www.estron.com.sg



*Product improvement is a continuous process,
please check specifications at point of purchase.*