



ESTRONTM

ESTRON MARKETING PTE. LTD.



FLOOR SPRING
Quality Architectural
Hardware Specialist



UNIVERSAL APPLICATION, MULTI-FUNCTIONAL, QUALITY ASSURED

The Estron Floor Spring has a double action and universal design which has been specially developed for the aluminium and toughened glass door industries.



1. FH-840

- Suitable for left, right opening, single-door, double-door opening.
- Available in 4 sizes for door weights of up to 120kg and width of up to 1250mm.
- Wide range of functions: back-check, mechanical, hold-open.
- The door can be held at an angle of 90 degrees.
- Finishing: Satin (SSS) / Black (BK)



FH-840 Matte Black (BK)

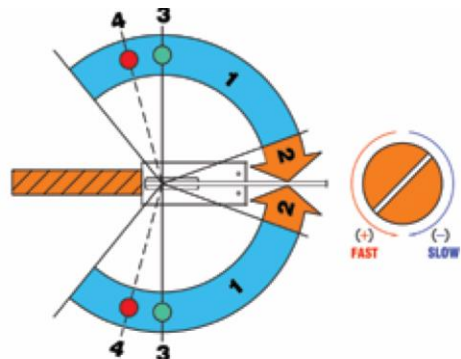


CLOSING RANGES

- 20° – 0° is 1st adjusting closing range
- 130° – 20° is 2nd adjusting latching range

HOLD-OPEN

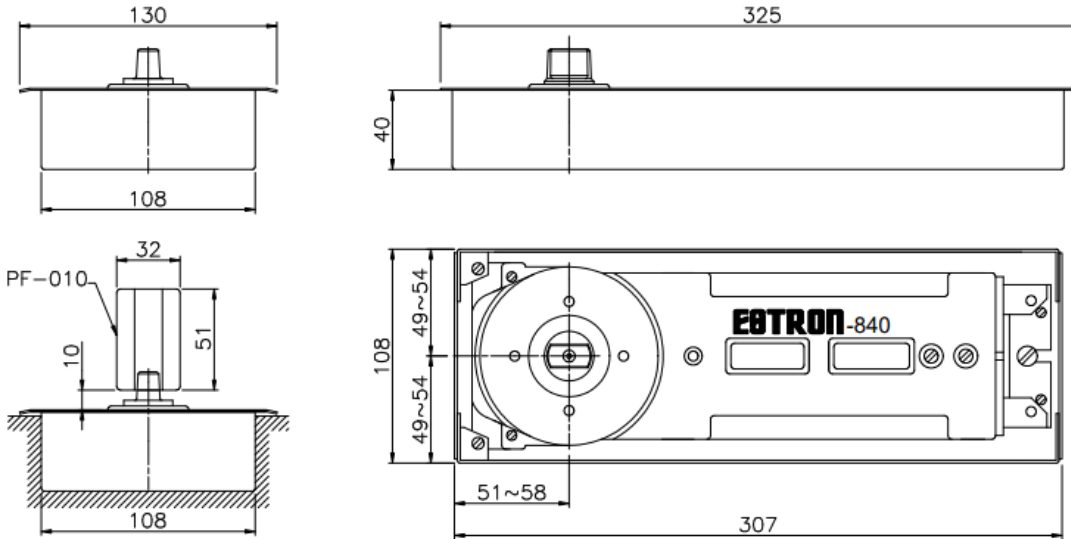
- With the hold-open, the door can be held at angle of 90°.





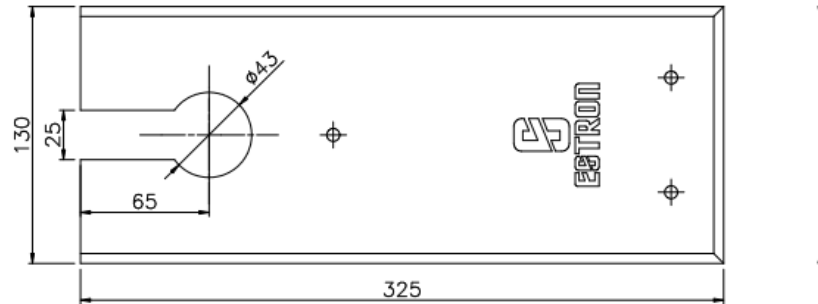
FH-840 FLOOR SPRING

DIMENSIONS



FH-84 COVER

- 320mm (L) x 130mm (W)



TECHNICAL DATA

Floor Spring Size Code	EN1	EN2	EN3	EN4
Spring Strength, approx. (Nm)	15	20	25	33
Max Door Width (mm)	< 700	< 950	< 1050	< 1250
Double action Door	Yes	Yes	Yes	Yes
Closing and latching speed adjustable by valves	Yes	Yes	Yes	Yes
90° hold open	Yes	Yes	Yes	Yes
Non hold open	Optional	Optional	Optional	Optional
Dimension, L x W x H (mm)	306x108x40	306x108x40	306x108x40	306x108x40



FH-840 FLOOR SPRING

(Heavy Duty)

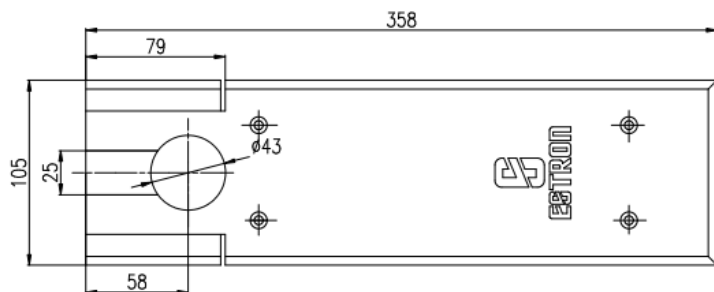
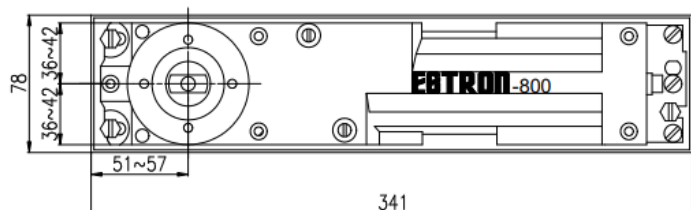
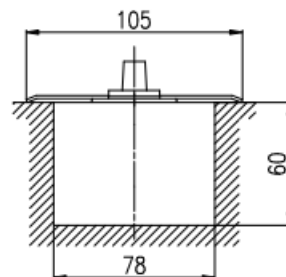
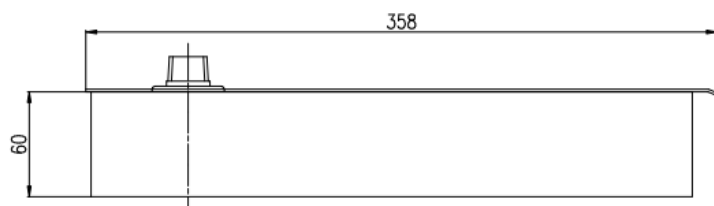
2. FH-800 (Heavy Duty)

- For Wooden, Aluminium and Heavy Duty doors
- Suitable to hold door leaves up to 300kg, not more than 1400mm width
- Suitable for left, right opening, single-door, double-door opening.
- Three model variants, adjustable between EN3 – EN6 (23Nm – 58Nm)
- The door can be held at an angle of 180 degrees.
- Finishing: Satin (SSS)



FH-800 (SSS) illustration

DIMENSIONS



1. Adjustment of clearance between hinge jamb and door stile: Loosen screws **(B)** and **(C)**
2. Adjustment of door height: Loosen screws **(B)**, **(C)**, and adjust screw **(A)**
3. Centering door: Loosen screws **(B)** and **(C)**
4. Adjustment of closing speed:
 - Two regulating valves **(D)** and **(E)**
 - decrease closing speed.
 - increase closing speed
 - Valve **(D)** : control closing range 180°-15°
 - Valve **(E)** : control closing range 15°-0°
5. Adjustment of spring tension **(F)** :
 - increase spring tension
 - decrease spring tension



Estron Marketing Pte. Ltd.

141 Woodlands Industrial Park E5 E-terrace Singapore 757507

tel. +65 6853 9041 fax. +65 6853 9042

e-mail. sales@estron.com.sg url. www.estron.com.sg



*Product improvement is a continuous process,
please check specifications at point of purchase.*