



ESTRON MARKETING PTE. LTD.



**SF-20 FRAMELESS BI-FOLD
GLASS PARTITION**

Quality Architectural Hardware Specialist



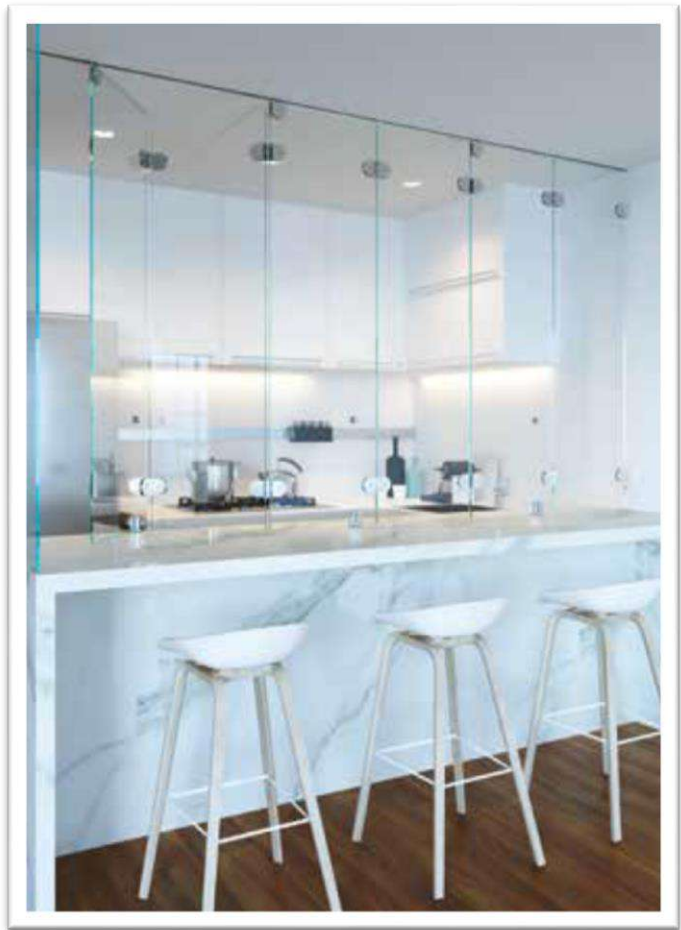
FEATURES

- Glass Thickness: 8mm – 10mm
- Max Glass Weight: 20kg per panel
- Glass Preparation: Required
- Material: Brass
- Finish: CP (Chrome Polish) & Matte Black (BK)

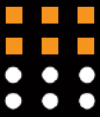
An elegant bi-fold door system tailored for narrow entry or confined space use. This beautiful top hung design with no bottom track, folds compact to occupy little space when open. Perfect for residential interior applications. Installation is simple with top/bottom pivot or wall hinge option.



Option Type 1:
Top & Bottom Pivot Application
Up to 2 panels to each side



Option Type 2:
Wall Mount Application takes up
to 6 panels each side

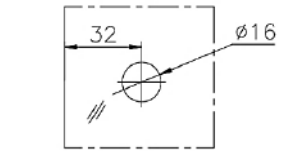
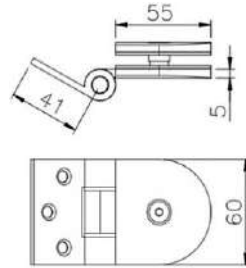


COMPONENTS & GLASS PREPARATION:



ESH-501

Finish: CP / BK (Wall Mount Hinge)

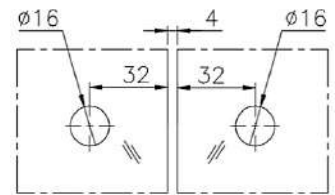
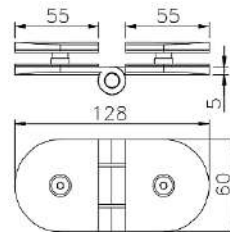


GLASS PREPARATION



ESH-502

Finish: CP / BK (Glass to Glass Hinge)

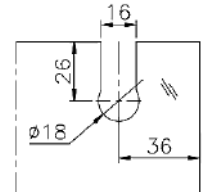
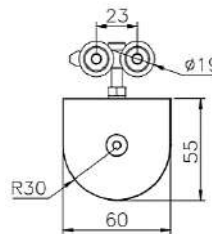


GLASS PREPARATION



ESH-503-CC

Finish: CP / BK (Carriage Roller Clamp)

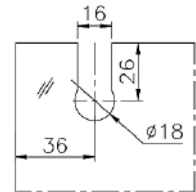
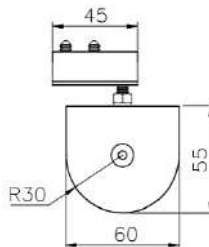


GLASS PREPARATION



ESH-503-TP

Finish: CP / BK (Top Pivot Hinge)

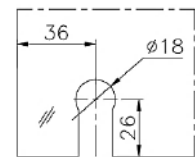
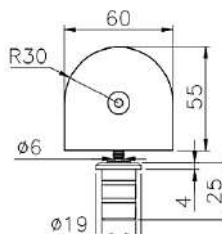


GLASS PREPARATION

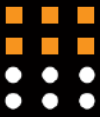


ESH-503-BP


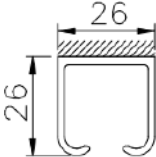

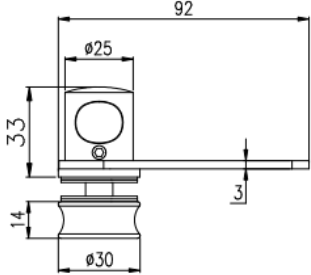
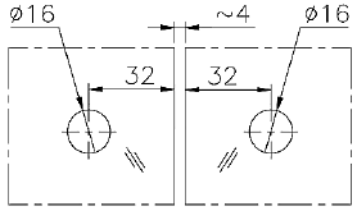

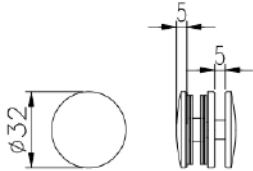
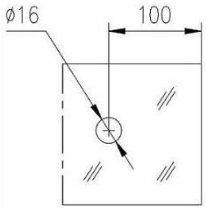

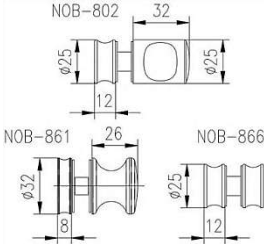
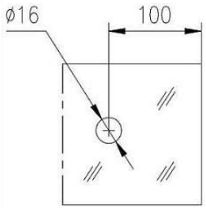
Finish: CP / BK (Bottom Pivot Hinge)







GLASS PREPARATION



COMPONENTS & GLASS PREPARATION:

 <p>RT-040 Finish: Polish / BK (Top Track)</p>		
 <p>SL-403R/L-D SL-403R/L-D-BK Finish: CP / BK (Latch)</p>		 <p>SL-403L/R-D SL-403G-1 GLASS PREPARATION</p>
 <p>SL-403G-1 SL-403G-1-BK Finish: CP / BK (Latch Strike)</p>		 <p>GLASS PREPARATION</p>
 <p>NOB-802 (CP) NOB-861 (CP / BK) NOB-866 (CP / BK)</p>		 <p>GLASS PREPARATION</p>

RECOMMENDED SEALING STRIPS:

10mm Glass			8mm Glass	
 <p>LSS-10J (2.8m) (Clear / Black)</p>	 <p>LSS-10P (2.8m) (Clear / Black)</p>	 <p>LSS-10KM (2.8m) (Clear / Black)</p>	 <p>LSS-08A (2.7m) (Clear / Black)</p>	 <p>LSS-08E (2.2m) (Clear / Black)</p>

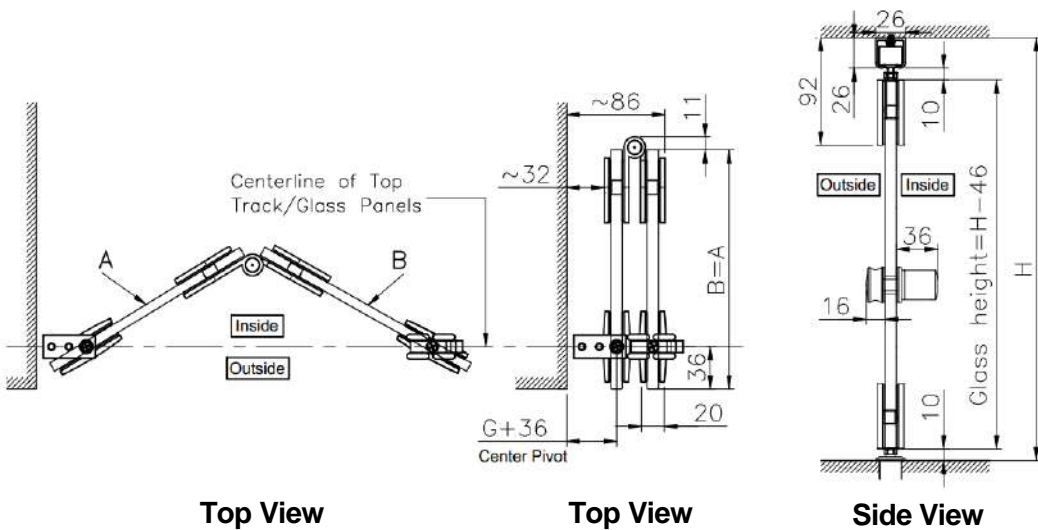
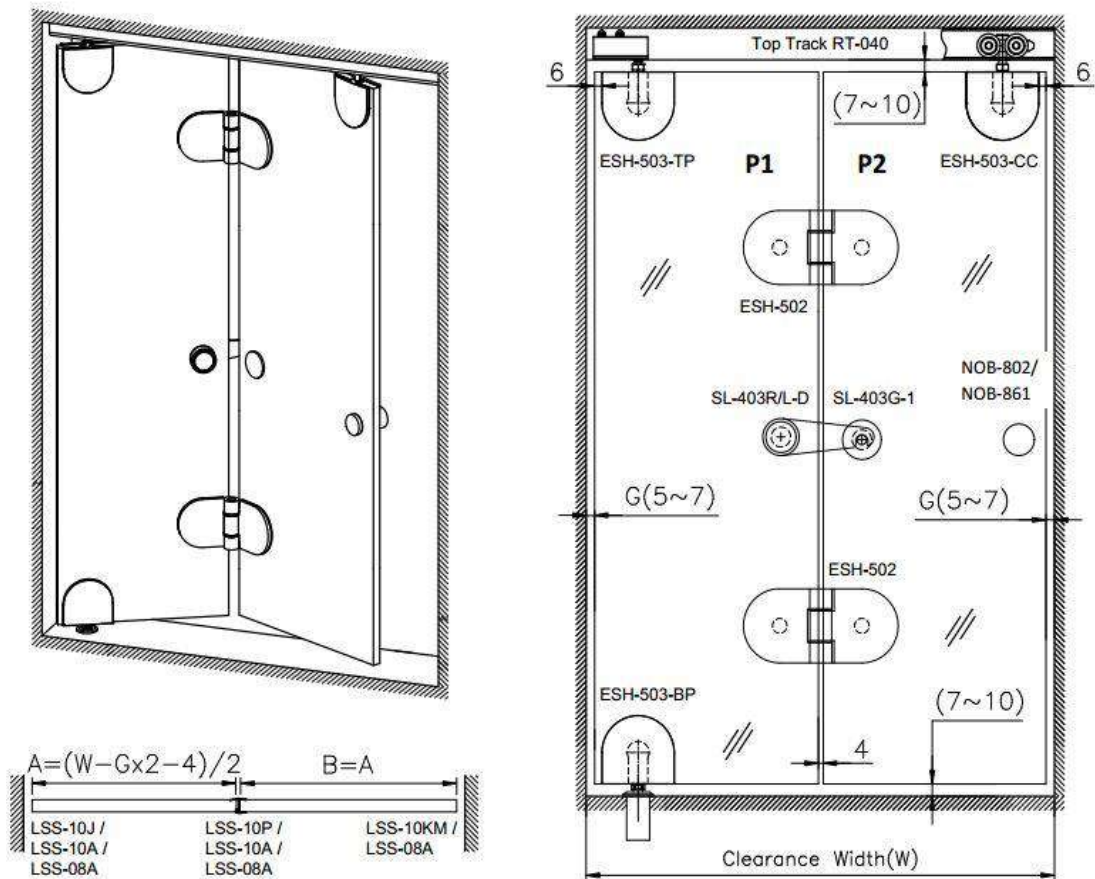


SF-20 FRAMLESS BI-FOLD GLASS PARTITION

TYPE 1

- Top & Bottom Pivot Hinge
- Up to 2 panels, both glass panels width are the same

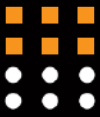
Front View



Top View

Top View

Side View

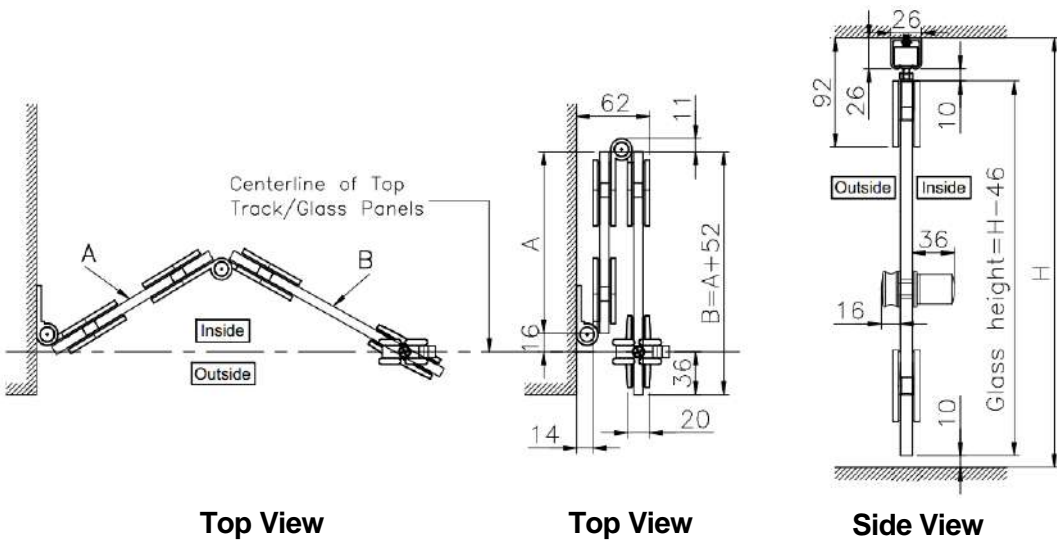
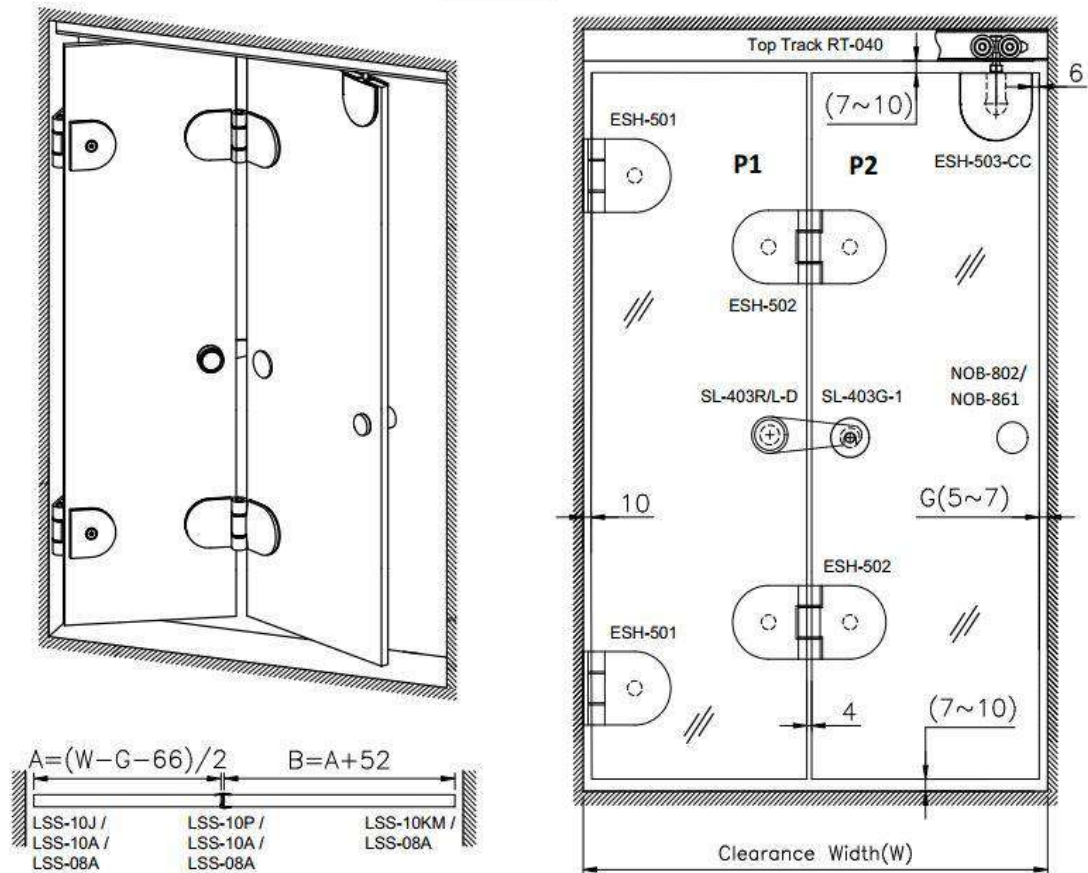


SF-20 FRAMLESS BI-FOLD GLASS PARTITION

TYPE 2

- Wall Mount Hinge
- Up to 6 panels, first panel (i.e. P1) is 52mm shorter than remaining panels

Front View





Estron Marketing Pte. Ltd.

141 Woodlands Industrial Park E5 E-terrace Singapore 757507

tel. +65 6853 9041 fax. +65 6853 9042

e-mail. sales@estron.com.sg url. www.estron.com.sg



*Product improvement is a continuous process,
please check specifications at point of purchase.*