



**ESTRON**<sup>TM</sup>

ESTRON MARKETING PTE. LTD.



## **BGS-55 BALCONY GLAZING SYSTEM**



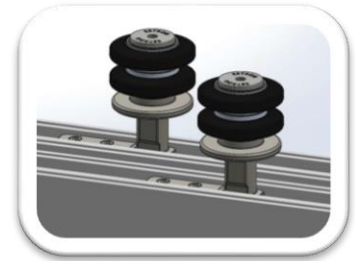
## SOLUTION TO BRAVE WIND & WEATHER

ESTRON Balcony Glazing System, designed with elegance in mind to suit current increasing demand of a weather and waterproof operable glass system for balconies doors, terraces, as living areas dividers, windows and even as facade structure to enhance appearance of homes with alluring features of the glazier system.

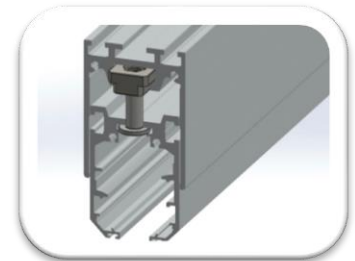
Space saving, high flexibility and the ease in effortless operation are highlights of the system. The independent glass panels of the system are able to move easily and individually, creating more spaces when opened and stacks to the side with only minimal space required.

## MAIN FEATURES OF BGS-55

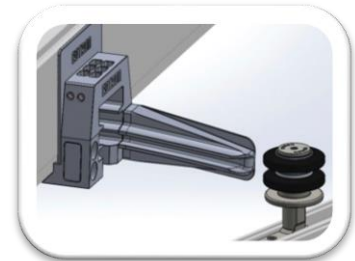
- ✓ Weather & Waterproof
- ✓ Frameless glass of thickness 8mm - 10mm  
Glass panels clamped to door rails securely
- ✓ End caps of door rails has designed to work as interlock mechanism between panels for security
- ✓ Guide pin running in bottom track for stability
- ✓ Top hung tracks carriage rollers made with metal core in the inside braced with needle bearing to maximize loading weight evenly & stronger in strength
- ✓ Tracks with exit points for system rollers
- ✓ Drainage function in bottom track to dissipate rain water
- ✓ Pile Weather-Strips attached at top track & bottom rail helps to hold off rain and dust.
- ✓ Gap ventilation available for adjustments (approx.7mm ±)
- ✓ Choice of direction to open the panels (inwards/ outwards)
- ✓ Knob Handle with lockable cable turning mechanism
- ✓ Choice of system configurations(straight/cornered/angled/segmented)



**Top-hung Carriage Rollers With Metal Core**



**Adjustable section in track For Tolerance (6mm ±)**



**Exit Point For Carriage Rollers**



**Locking Handle (two-sided)**



**End Cap For Pivot Panels**



**End Cap Between Wall and Panel**



**Locking Handle (one-sided)**



**End Cap For Angle Joint**



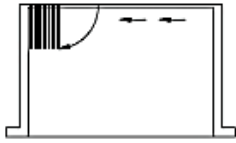
**End Cap for Linear Joint**



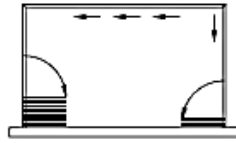
**Angled Position**



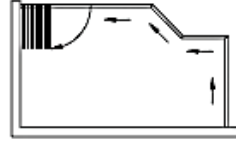
## TYPICAL CONFIGURATION



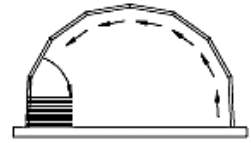
① Straight



② Cornered



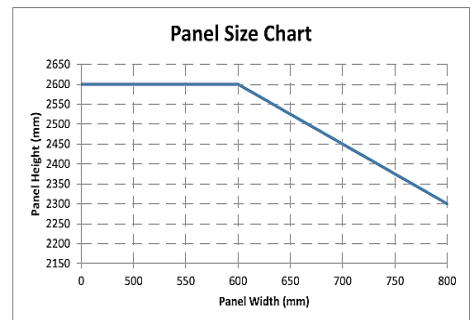
③ Angled



④ Segmented

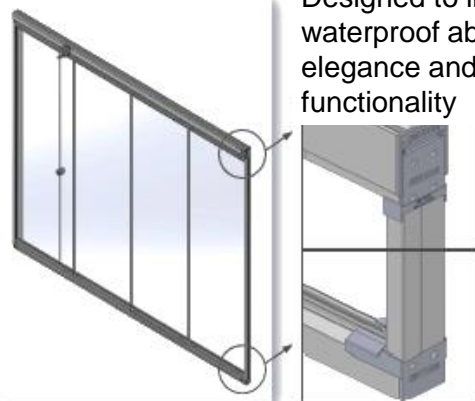
## TECHNICAL DATA

- ✓ Max. Weight Per Panel:  
**55kg** Per Glass Panel
- ✓ Glass Thickness:  
**8 / 10** mm
- ✓ Max. Number of Panels:  
**7 Panels** Per Side
- ✓ Max. Weight and Height is subjected to:



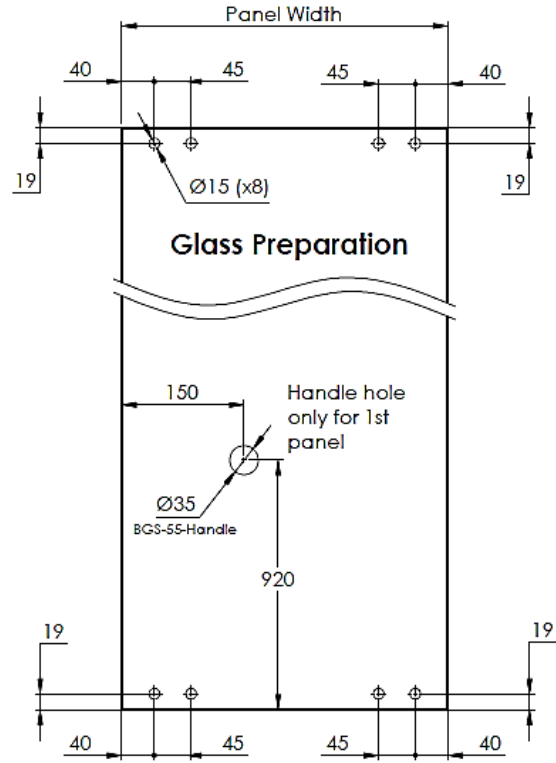
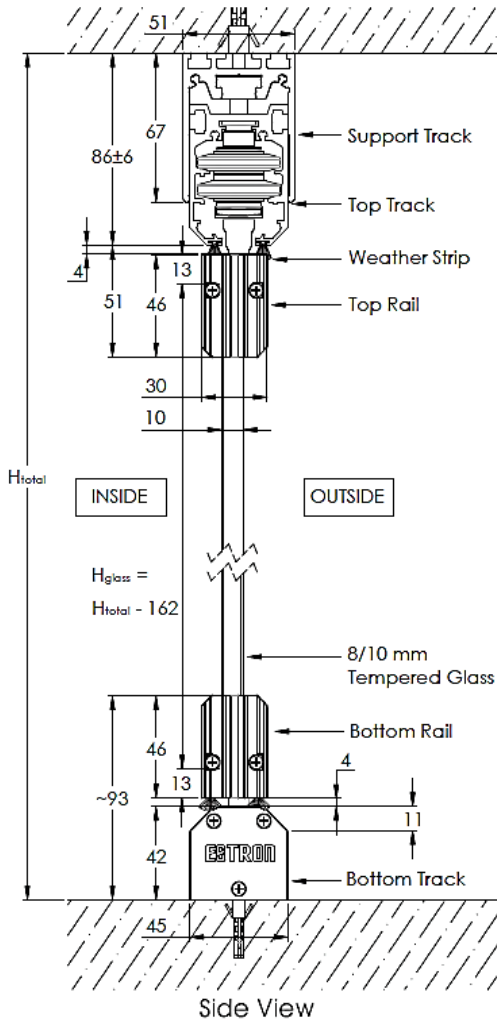
## SIDE JAMB PROFILE (Optional)

Designed to improve waterproof ability with elegance and functionality

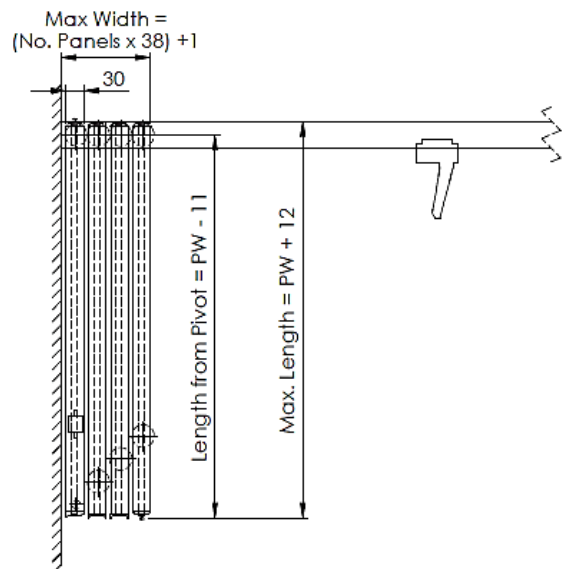




## TECHNICAL DRAWING



\*\* Note: Glass prepared should not be larger than the calculated dimension.



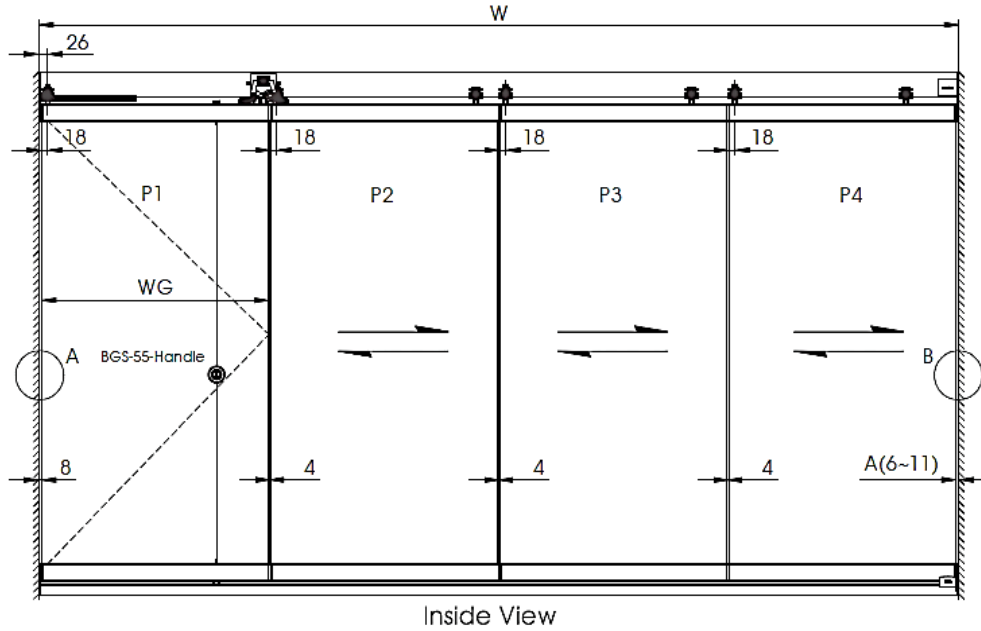
**Durability**  
**(PSB 50,000 Cycles**  
**Endurance Test)**

ESTRON BGS-55 has been put to 50,000 Cycles Endurance Test which focused on opening and closing operation (slide and swing).

As the test result, It has successfully passed and attained certification from TUV SUD PSB, one of world renowned testing agency.



## TECHNICAL DRAWING



$$\text{Glass Panel Width} = \frac{W - 8 - A(6-11) - (N-1) \times 4}{N}$$

(Without Side Jamb Profile)

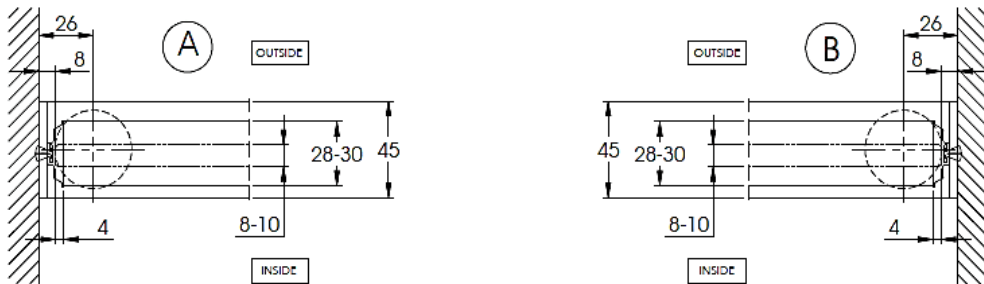
$$\text{Glass Panel Width} = \frac{W - 22 - A(22-28) - (N-1) \times 4}{N}$$

(With Side Jamb Profile)

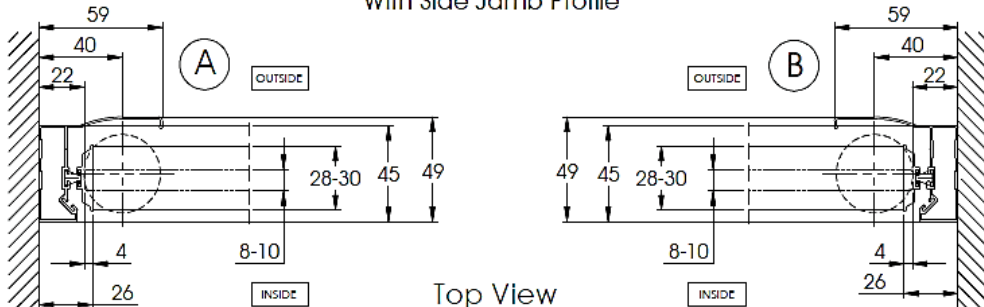
N = No. of Total Panels  
W = Clear Opening Width

WG = Width of Glass

### Without Side Jamb Profile



### With Side Jamb Profile





**Estron Marketing Pte. Ltd.**

141 Woodlands Industrial Park E5 E-terrace Singapore 757507

tel. +65 6853 9041 fax. +65 6853 9042

e-mail. sales@estron.com.sg url. www.estron.com.sg



*Product improvement is a continuous process,  
please check specifications at point of purchase.*