

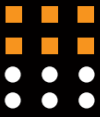


ESTRONTM

ESTRON MARKETING PTE. LTD.



SF-50 FRAMELESS BI-FOLD GLASS PARTITION



SF-50 FRAMLESS BI-FOLD GLASS PARTITION

FEATURES

- Material: SS304 Stainless Steel
- Finish: Satin (SSS) / Matte Black (BK)
- Glass Thickness: 8mm – 12mm
- Max Glass Height: 2500mm
- Max Glass Weight: 50kg per panel
- Glass Preparation: Required
- Max Glass Width W/O Bottom Track: 600mm
- Max Glass Width With Bottom Track: 800mm

ESTRON brand Frameless Bi-fold Glass Partition specially designed for the increasing demand of the need for spaces in the now constrained residential homes. With no rails and bottom track, the system catches the eye of any guest to the home almost immediately with the exquisite appearance. Transparency of glass can also make any home looks more spacious, which is the advantage of SF-50.



SF50-10 (L/R)



SF50-11 (L/R)



SF50-20



SF50-30 (A/B)



SF50-31 (L/R)



SF50-40 (L/R)



SF50-41 (L/R)



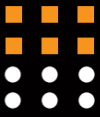
SF50-50



SF50-51



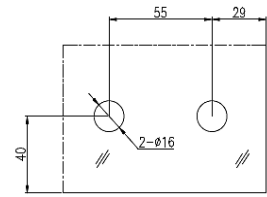
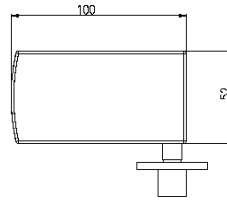
SF50-60



GLASS PREPARATION:



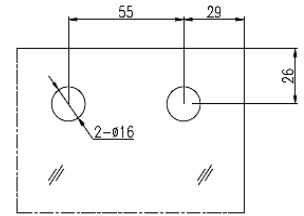
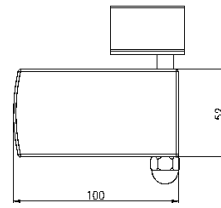
SF50-10 (L/R)
Bottom Pivot (SSS/BK)



GLASS PREPARATION



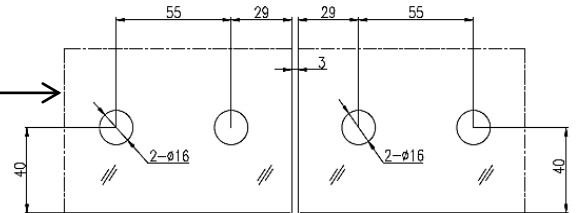
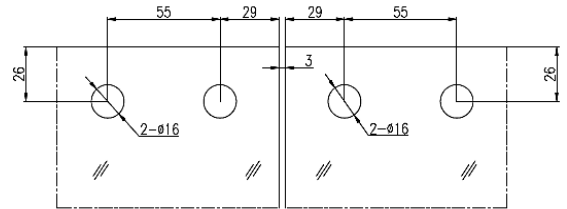
SF50-11 (L/R)
Top Pivot (SSS/BK)



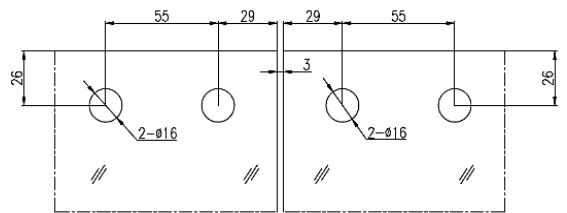
GLASS PREPARATION



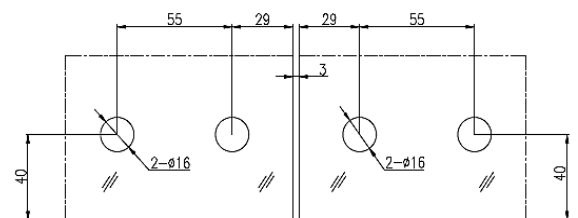
SF50-20
Top Hinge (SSS/BK)
Bottom Hinge (SSS/BK)



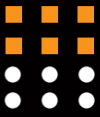
SF50-40 (L/R)
Double Carriage Roller (SSS/BK)



SF50-30 (A/B)
Double Bolt (SSS/BK)



GLASS PREPARATION

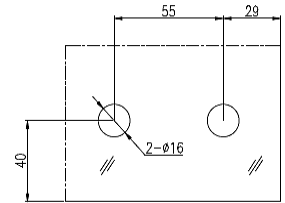
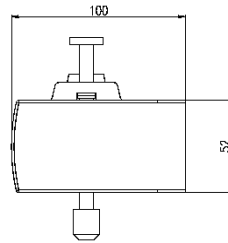


SF-50 FRAMLESS BI-FOLD GLASS PARTITION

COMPONENTS & GLASS PREPARATION:



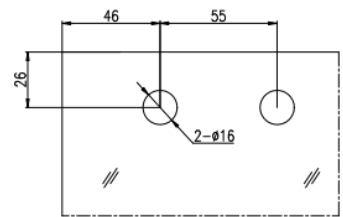
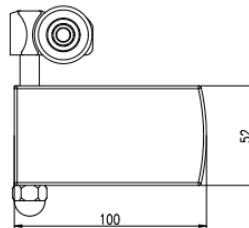
SF50-31 (L/R)
Single Bolt (SSS/BK)



GLASS PREPARATION



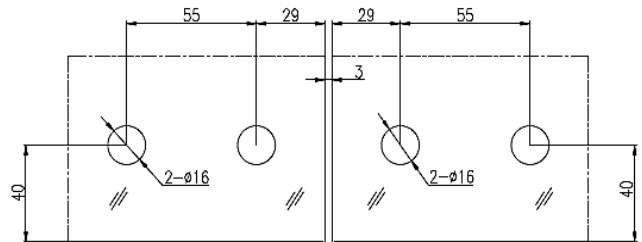
SF50-41 (L/R)
Single Carriage Roller (SSS/BK)



GLASS PREPARATION



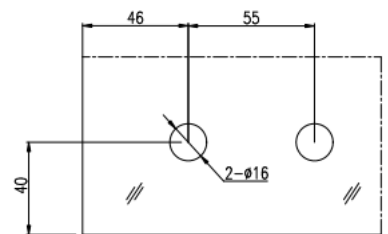
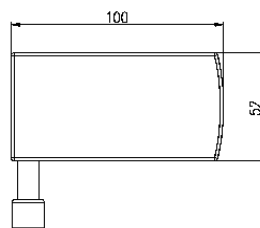
SF50-50
Double Bottom Hinge Guide (SSS)



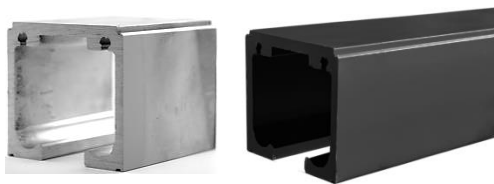
GLASS PREPARATION



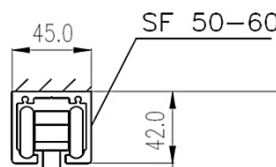
SF50-51
Single Bottom Hinge Guide (SSS)



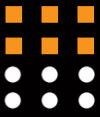
GLASS PREPARATION



SF50-60 (L/R)
Top Track (NA / BK)



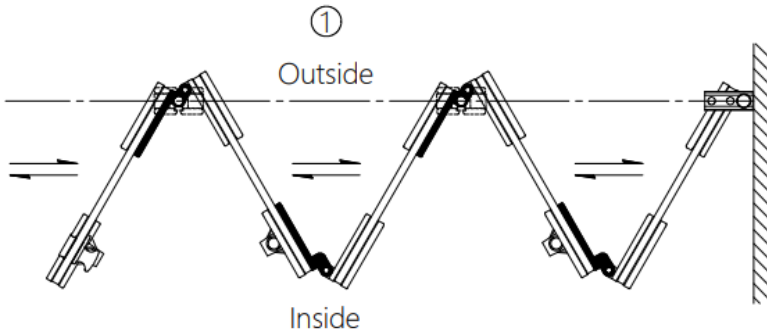
Available length:
N/A: 2 / 3 / 4 / 6m
BK: 5m



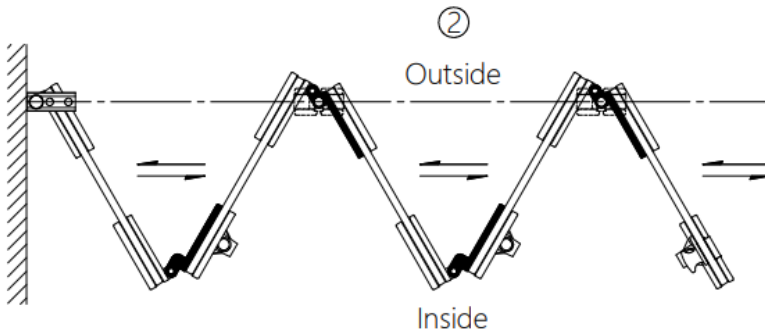
SF-50 FRAMLESS BI-FOLD GLASS PARTITION

ELEVATION DRAWING:

Application of system hardware varies depending on the direction it is being kept to.

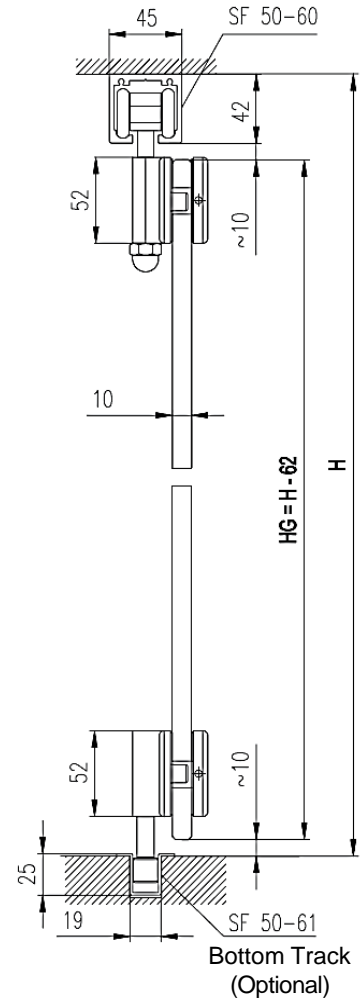


Inside View: Panels Keep to the Right



Inside View: Panels Keep to the Left

Sectional Details:



RECOMMENDED LOCK & HANDLE



PL-36



SL-70



NOB-861



NOB-801



Estron Marketing Pte. Ltd.

141 Woodlands Industrial Park E5 E-terrace Singapore 757507

tel. +65 6853 9041 fax. +65 6853 9042

e-mail. sales@estron.com.sg url. www.estron.com.sg



*Product improvement is a continuous process,
please check specifications at point of purchase.*